

## **A Preliminary Reconnaissance Geothermal Mapping in West New Britain Province, Papua New Guinea**

Maxine Lahan, Ronald Verave and Philip Irarue

Geological Survey Division, Mineral Resources Authority, P O Box 1906, Port Moresby, NCD, PNG

mlahan@mra.gov.pg

**Keywords:** Geothermal mapping, geochemical sampling, geothermal features, geothermal waters, geochemical analysis, geothermometry, geochemistry, hot spring, West New Britain, New Britain Island, Papua New Guinea.

### **ABSTRACT**

West New Britain Province, which occupies the western part of New Britain Island in Papua New Guinea, is ideally located within an active tectonic region that influences volcanism creating an environment favourable for geothermal activity. Geothermal mapping of surface manifestations reveal high temperature geothermal prospects along the northern coastline of West New Britain Province that are further confirmed by geochemical analysis. The occurrence of geothermal features is confined to the Quaternary Kimbe Volcanics and alluvium in the lowland areas. The features in Talasea appear to be controlled by deep-seated northerly trending faults while structures in Hoskins also appear to be deep seated but have not been identified. The geothermal systems in West New Britain Province have not been drilled, but preliminary reconnaissance geothermal mapping and geochemical analysis reveals four high temperature geothermal prospects suitable for further investigation and development of geothermal energy. These are the Pangalu (Rabili) and Talasea Station geothermal prospects in Talasea and Kasiloli (Magouru) and Silanga (Bakama and Sakalu) geothermal prospects in Hoskins. The calculated reservoir temperatures for these fields are in the range of 245-310 °C. Recommendations are made for further follow up exploratory investigations.

### **1. INTRODUCTION**

The volcanic island of New Britain is the most prospective region for the development of geothermal energy resources in Papua New Guinea (PNG). The Island is located east of mainland PNG and lies between the Manus Basin to the north and the New Guinea Trench to the southeast (Figure 1). The geothermal prospects are scattered on the northern coastline from the Willaumez Peninsula in Talasea, West New Britain Province (WNB) to the Gazelle Peninsula in Rabaul, East New Britain Province (ENBP) (Figure 1). Volcanically, New Britain Island comprises of several dormant volcanoes and two currently active volcanoes; Pago in Cape Hoskins area in WNB and the Rabaul (Tavurvur) volcano in the Gazelle Peninsula in ENBP. WNB occupies the western and most of the central part of New Britain Island while the eastern portion is occupied by ENBP.

West New Britain Province hosts a large oil palm industry that serves as its main economic activity apart from other business activities in Kimbe, its provincial capital and its smaller towns, Hoskins and Biella. There are approximately 128 800 people (NRI Report, 2010) in the Talasea District of WNB who directly or indirectly depend on oil palm for their livelihood. The main sources of electricity for the province is by the use of four 400-600kW diesel generators and two mini-hydro power plants supplied by PNG Power Limited (pers. comm. with John Aska, Kimbe generation team leader). The oil palm plantations in the province provide some of its own energy due to insufficient electricity needs and frequent power outages.

Geoscientific information on the geothermal prospects in the country including WNB is sparse although previous reconnaissance geochemical survey undertaken in Talasea provided temperatures which ranged from 44-101 °C (Berhane and Mosusu, 1997). There have never been any geophysical survey for geothermal exploration nor drilling conducted in the country except on Lihir Island where a 56 MW geothermal power plant is in operation supporting the gold mine. PNG through Mineral Resources Authority (MRA) has now embarked on undertaking geothermal exploration in the country with assistance from the World Bank and the Government of Iceland through training of its staff, as there is a need to diversify in its energy source and increase the energy needs of the country.

The reconnaissance field survey of the various geothermal sites in the Talasea District of WNB was undertaken in November 2012 as part of MRA's ongoing geothermal exploration work. This report provides the results of the geochemical analysis of the water samples and attempts at identifying prospective geothermal sites for further exploratory work.

### **2. GEOLOGICAL SETTING AND GEOTHERMAL FEATURES**

#### **2.1 Tectonic Setting**

New Britain Island is part of the New Guinea island arc complex that represents the tectonically active margin of the Australian continental mass. It is situated in a collision zone between three major plates; the northward moving Indo-Australian, the west-northwest moving Pacific and the eastward moving Caroline plates. The boundary between the Pacific and the Australian plates is marked by a number of microplates; the Solomon Plate in the southeast and North and South Bismarck plates to the north of the island (Johnson and Molnar, 1972). These microplates located offshore are bounded by spreading ridges, deep-sea trenches and transform faults while those onshore are represented by thrusts, extensional and strike-slip faults and folds. Earthquakes are located on these spreading ridges (Davies, 2009).

The PNG region experiences very high seismicity due to its location on the "Ring of Fire". The main concentration of seismicity is at the northern and northeastern margins of the Solomon Sea where the Solomon Plate is subducted northward beneath the South Bismarck and the Pacific Plates along the New Britain Trench (Figure 2). Seismicity in this area has been described as the most intense in the world (Ripper and McCue, 1983; Cooper and Taylor, 1989). Seismicity continues from this area towards the

southeast through the Solomon Islands, and towards the northwest under the northern part of the New Guinea Island. The volcanoes of New Britain are the result of subduction of the northward-migrating Solomon Sea Plate under the South Bismark Plate. The volcanoes in the Solomon Islands are associated with the Solomon Sea Plate as it is subducted beneath the Pacific Plate.

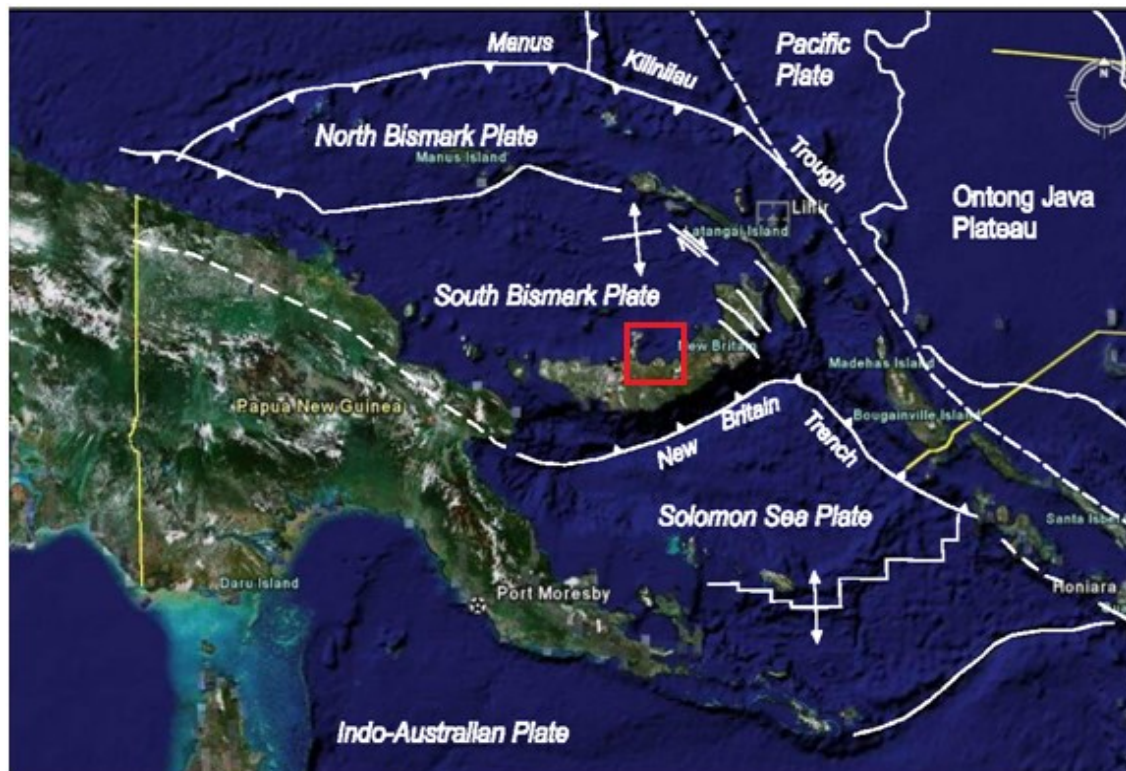


Figure 1: Map of PNG showing the tectonic setting and study area (red square) on New Britain Island. Modified from Williamson and Hancock, 2005.

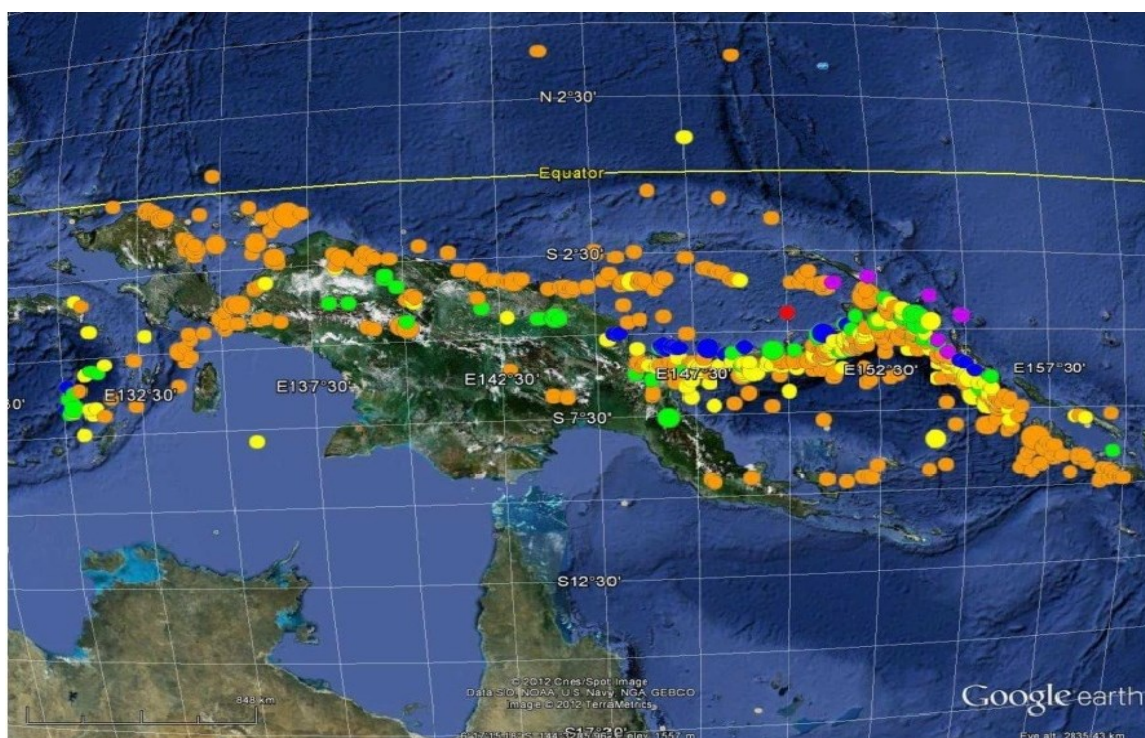


Figure 2: Earthquakes of magnitude 6 or greater in the PNG region between 1972 and 2012. Depths: orange = 0-35 km, yellow = 35-70 km, green = 70-150 km, blue = 150-300 km, pink = 300-500 km, and red = 500-800 km. From the USGS/NEIdatabase, accessed at <http://earthquakes.usgs.gov/earthquakes/eqarchives/epic.rect.php>. (After Sheppard and Cranfield, 2012).

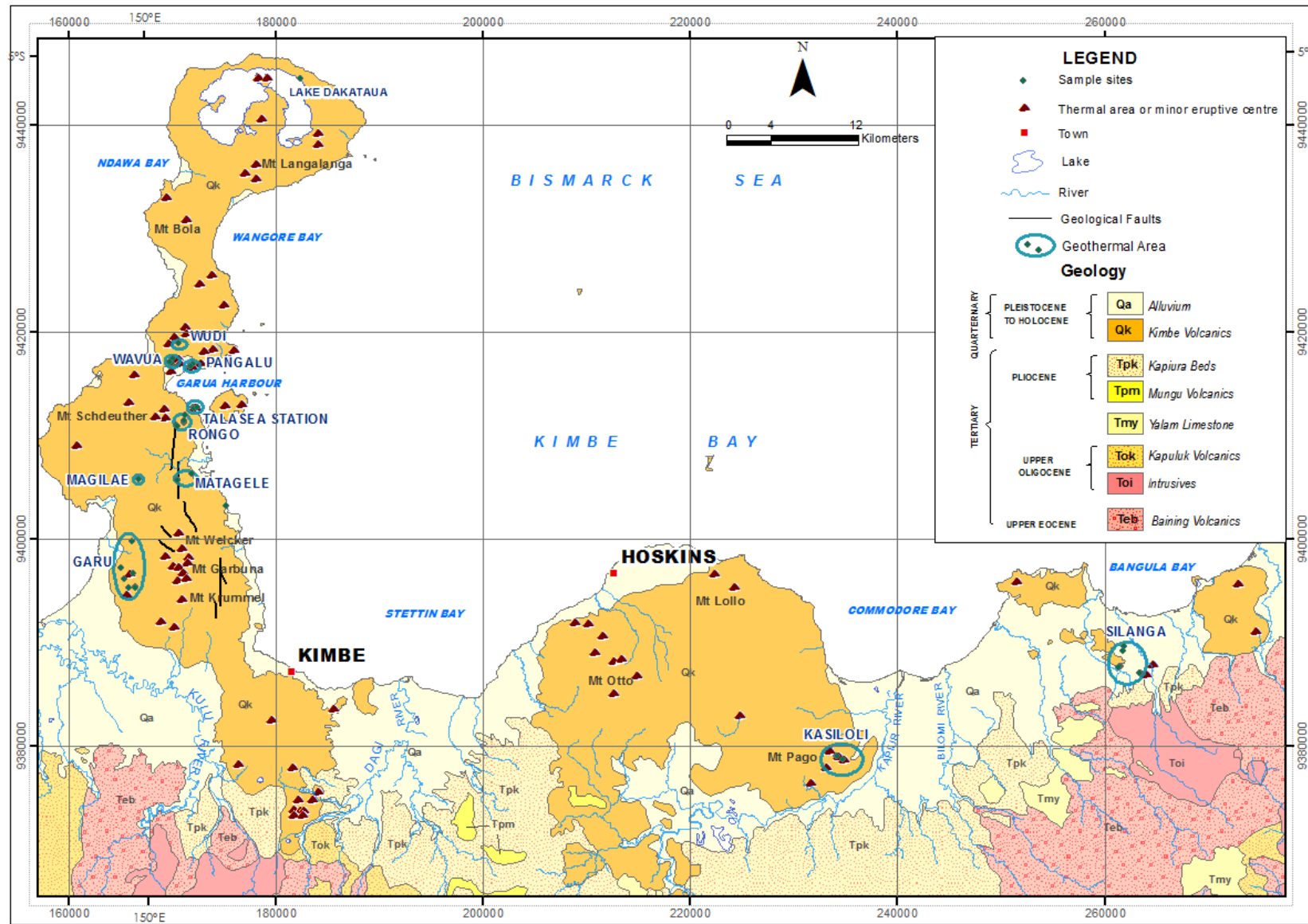


Figure 3: Geology of the Talasea - Hoskins area showing the locations of the geothermal sites visited (Map after Ryburn, 1975).



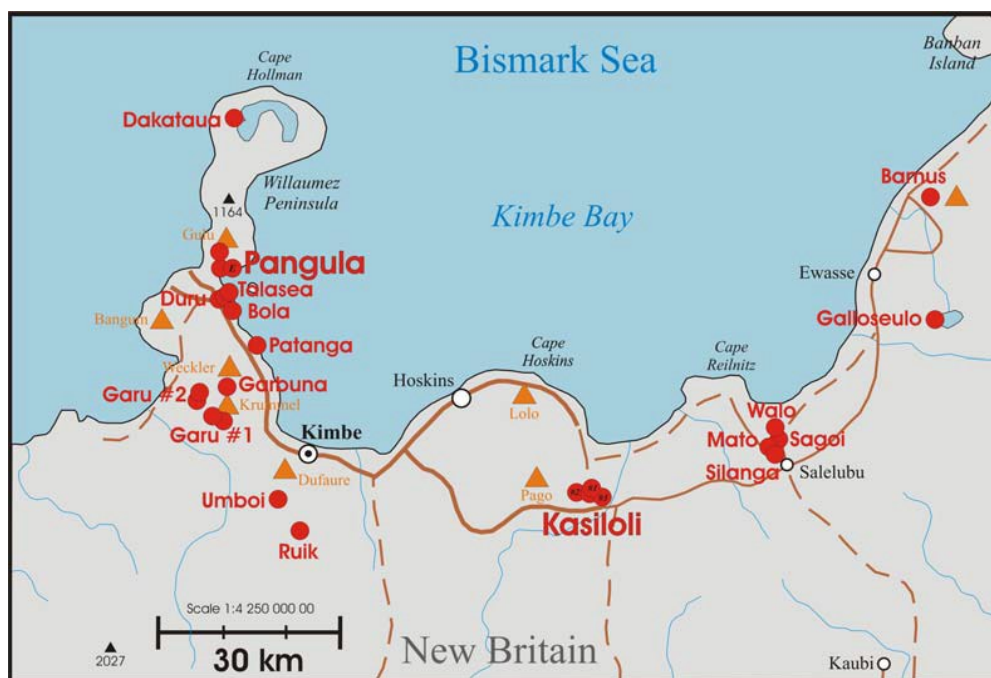
## 2.2 Geology

New Britain Island mostly comprises of Tertiary to Quaternary volcanic materials. Several dormant and active volcanoes exist along the northern coastline from west to east (Lowder and Carmichael, 1970). Baining Volcanics (*Teb*) which accumulated in an Eocene island arc is the oldest rock type on the island. It comprises of massive to well-bedded indurated and strongly-jointed volcanic breccia, conglomerate, sandstone and siltstone, basic to intermediate lavas and hypabyssal rocks, tuff and minor limestone. There is widespread occurrence of andesitic to basaltic intrusives on the island. In the West New Britain area, deposition of Kapuluk Volcanics (*Tok*) occurred when volcanism resumed in the late Oligocene. The Kapuluk Volcanics is of similar lithology to the Baining Volcanics but markedly less indurated, jointed and fractured and widely zeolitized. Slow regional subsidence during a period of volcanic quietness in the early Miocene to early Pliocene, allowed large thicknesses of the Yalam Limestone (*Tmy*) to accumulate in reefs and inter-reef basins with little or no contaminations from terrestrial sources. It consists of compact or porous, massive to well-bedded bioclastic limestone, chalk, calcareous siltstone and mudstone with minor calcirudite (Ryburn, 1975).

Renewed volcanism in Pliocene formed the Mungu Volcanics (*Tpm*) found southeast of Stettin Bay which comprises dacite, rhyodacite, andesite and pumiceous tuff. They possibly represent the volcanoes that supplied the tuffaceous material in the Kapiura Beds (*Tpk*) found east of Kasiloli thermal area. The Kapiura Beds consists of semi-consolidated, massive to well-bedded acid tuffaceous sandstone, siltstone and conglomerate, tuff, calcareous sediments and limestone. The Talasea Peninsula and Mt Pago area near Hoskins comprise of Quaternary Kimbe Volcanics which are basaltic to rhyolitic pyroclastics and lavas as well as hypabyssal intrusives, while the Silanga geothermal area consists of Quaternary alluvium of gravel, sand and silt (Ryburn, 1975). Field observations during this survey noted that the Kimbe Volcanics at geothermal sites are strongly altered to clay due to thermal activity. Structures are difficult to identify however, observations of the geothermal occurrences show existence of northerly trending faults in the Talasea Peninsula which is a similar trend to faults mapped by Ryburn (1975). The geology of the survey area by Ryburn (1985) is presented in Figure 3.

## 2.3 Geothermal Prospects and Samples

There are at least seven geothermal prospects in WNPB (Grindley and Nairn (1974b) as shown in Figure 4; Pangalu-Talasea, Bola, Garbuna, Kasiloli-Hoskins, Walo (Silanga), Galloseulo and Bamus. Five of the seven prospects were investigated during this field work; Pangalu-Talasea, Bola and Garbuna (Garbuna area west of Garbuna) in the Williaumez (Talasea) Peninsula and Silanga and Kasiloli prospects in the Hoskins area. Galloseulo and Bamus prospects located in the east were not visited. In this report, Pangalu and Talasea are presented as separate prospects and Bola is part of Talasea.



**Figure 4. Map of Central New Britain (see Figure 2) between Williaumez Peninsula and Banban Island, showing the location of thermal areas (red circles) and active volcanoes (triangles). Map after Grindley and Nairn (1974b) taken from McCoy-West et.al (2009).**

A total of 36 geothermal surface features or manifestations (geysers, hot springs, mud pools/pots, fumaroles and/or steaming grounds) were mapped and field observations including basic measurements such as temperature, pH, salinity, conductivity and feature dimension taken. Water and gas samples were collected from selected sites; thirteen spring samples, 7 gas samples and a meteoric water sample from Lake Dakautaua located at the northern tip of Willaumez Peninsula. Details of sample sites are listed in Table 1 and locations shown in Figure 3. The samples were sent to the New Zealand Geothermal Analytical Laboratory (NZGAL), GNS Science, Wairakei for analysis. All gas samples were reportedly contaminated with air and were not analyzed. The contamination of the gas samples by air is likely due to samples collected from small gas seeps using improper equipment. The majority hot spring samples and the meteoric water sample (10) are from Willaumez Peninsula, three from Silanga and one from Kasiloli geothermal prospects. These features are located within oil palm plantations, near settlements and within close proximity to Kimbe and Hoskins towns, hence easily accessible.

**Table 1: List of geothermal features sampled for water and gas analysis and their localities.**

District	Area	Feature Name	Water	Gas
Talasea (Williametz Peninsula)	Pangalu	Rabili	1	2
	Wavua	Wavua 1	1	1
	Wudi	Wudi	1	
	Talasea Station	Talasea Station	1	
		Rongo 1	1	
	N. Gabuna	Matagele	1	1
	N. Gabuna	Magilae	1	
	W. Gabuna	Garu	1	1
		Tabero	1	1
	Lake Dakataua	Lake Dakataua	1	
Hoskins	Kasiloli	Magouru	1	1
		Bakama 1	1	
		Sakalu/Mato	1	
		Taliau	1	

**Table 2. Hot spring compositions in mg/L except where noted.**

Sample Name	Lab No.	Date	Temp. °C	pH	Na	K	Ca	Mg	SiO <sub>2</sub>	B	Cl	SO <sub>4</sub>	HCO <sub>3</sub> <sup>+</sup>	H <sub>2</sub> S	NH <sub>3</sub>	As	Fe	Al	Mn	Cond. µS/cm
Feature-1 RABILI	2013000037	08/11/12	22	5.32	9697	1965	961	25	447	24	18993	153	<20	<0.01	7.1	1.9	0.55	<0.15	2.7	46830
Feature-5 WAVUA 1	2013000038	04/11/12	22	2.58	61	35	52	13.4	457	0.58	5.5	543	<20	0.27	9.6	0.029	11.5	2.5	1.4	1956
Feature-6 TALASEA STN	2013000039	05/11/12	22	5.91	4216	976	460	26	209	12.4	8122	194	<20	<0.01	3.8	0.56	0.09	<0.15	0.66	22715
Feature-11 RONGO 1	2013000040	05/11/12	22	6.99	9.7	5.3	4	1.2	169	<0.3	2.3	4.2	47	<0.01	0.01	<0.015	<0.02	<0.15	<0.005	139
Feature-14 MATAGELE	2013000041	06/11/12	22	3.51	6.2	4.1	23	7.1	110	<0.3	0.4	117	<20	0.02	0.32	<0.015	0.48	0.63	0.79	395
Feature-15 MAGILAE	2013000042	06/11/12	22	3.64	9.1	2.5	5.8	2.3	77	<0.3	2.4	117	<20	9.6	0.03	<0.015	5.2	1.1	0.19	242
Feature-17 LAKE DAKATAUA	2013000043	07/11/12	22	7.33	41	3.1	11.7	6.8	31	<0.3	24	30	68	0.02	0.03	<0.015	0.02	<0.15	<0.005	284
Feature-18 WUDI	2013000044	08/11/12	22	2.01	6.1	8.3	4.1	1.2	344	0.47	1.9	1075	29	14.4	5.2	0.015	20	43	0.22	4783
Feature-23 GALU	2013000045	10/11/12	22	1.93	29	10.5	58	25	256	2	415	790	21	24.3	0.39	0.07	8.8	56	1.2	6109
Feature-24 TABERO	2013000046	10/11/12	22	1.82	39	13	75	33	334	3.2	595	1025	<20	0.4	0.51	0.09	15	76	1.7	8035
Feature-28 BAKAMA 1	2013000047	11/11/12	22	6.19	1710	193	200	2	131	24	12888	28	27	<0.01	0.46	0.84	<0.08	<0.15	0.1	33725
Feature-29 TALIAU	2013000048	11/11/12	22	3.2	11.4	1.8	25	7.8	128	1.6	1.1	235	<20	0.04	11.1	<0.015	11.8	7.8	0.31	856
Feature-30 SAKALU	2013000049	11/11/12	22	7.43	5968	1177	462	0.45	205	105	11357	32	<20	<0.01	0.46	7.2	<0.08	<0.15	0.19	30260
Feature-32 MAGOURU	2013000050	12/11/12	21	7.2	6626	1401	496	3.9	420	92	3097	101	34	0.06	16.7	9.5	<0.08	<0.15	4	9335
Seawater				8	10450	354	405	1235	0.428	4.1	19520	2748	154			3.7*	15*		16*	
* = in µg/L																				

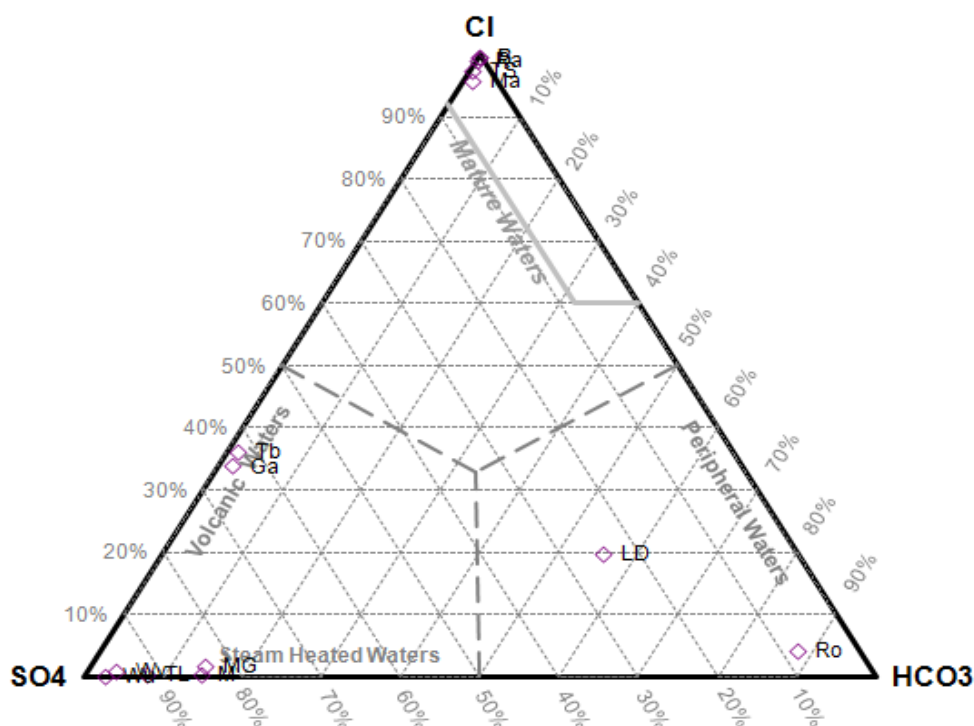
### 3. FLUID CHEMISTRY AND GEOTHERMOMETRY

#### 3.1 Fluid chemistry

The chemical compositions of the 14 water samples in terms of major and minor geothermal constituents are presented in Table 2. The local meteoric lake water (i.e., Lake Dakataua) and seawater (Pichler, 2005) are included in the table.

Using the Cl-SO<sub>4</sub>-HCO<sub>3</sub> plot in Figure 4, different types of thermal waters are distinguished such as steam-heated and volcanic waters based on major anion concentrations (Cl, SO<sub>4</sub> and HCO<sub>3</sub>). As shown in Figure 4, the Rabili, Talasea Station, Bakama 1 and Magouru springs are classified as matured waters, Galu and Tabero as volcanic waters, Lake Dakataua and Rongo 1 as peripheral waters and the rest of the hot springs as steam heated waters. The matured geothermal waters appear to be clear neutral-chloride boiling springs with very high chloride content compared to the SO<sub>4</sub> and HCO<sub>3</sub> components. The chloride concentration of Rabili hot spring (18993 mg/L) is close to that of seawater (19520 mg/L) hence likely infiltration of seawater due to its location along the shoreline. The volcanic waters discharge sulfuric gas and sulfur deposits as observed in the Garu area as is indicated by their SO<sub>4</sub> content. The rest of the steam-heated waters have high SO<sub>4</sub> and low Cl and are very acidic (pH= 1-4). Their acidity is caused by steam heating of shallow groundwater and oxidation of H<sub>2</sub>S to SO<sub>4</sub> in which there is insignificant Cl discharged.

The Na-K-Mg plot in Figure 5 further classifies the waters into fully equilibrated, partially equilibrated and immature waters based on the temperature dependence of the full equilibrium assemblage of potassium and sodium minerals that are expected to form after isochemical recrystallization of average crustal rock under conditions of geothermal interest (Giggenback, 1988). It can be used to predict the equilibrium temperature and also the suitability of thermal waters for ionic geothermometers. As shown in Figure 5, Sakalu is the only spring that has fully equilibrated with a calculated reservoir temperature of 295 °C while Magouru, Rabili, Talasea Station and Bakama 1 have partially equilibrated with calculated reservoir temperatures of 300°C, 295°C, 310°C and 245°C respectively.



**Figure 4: Ternary plot showing relative concentrations of the anions chloride (Cl), sulfate (SO<sub>4</sub>) and bicarbonate (HCO<sub>3</sub>). Plot has been generated using Powell and Cumming (2010). Ra = Rabili, Wv = Wavua 1, TS = Talasea Station, Ro = Rongo 1, M = Matagele, MG = Magilae, LD = Lake Dakataua, Wu = Wudi, Ga = Galu, Tb = Tabero, B = Bakama 1. TL = Taliau, S = Sakalu, Ma = Magouru.**

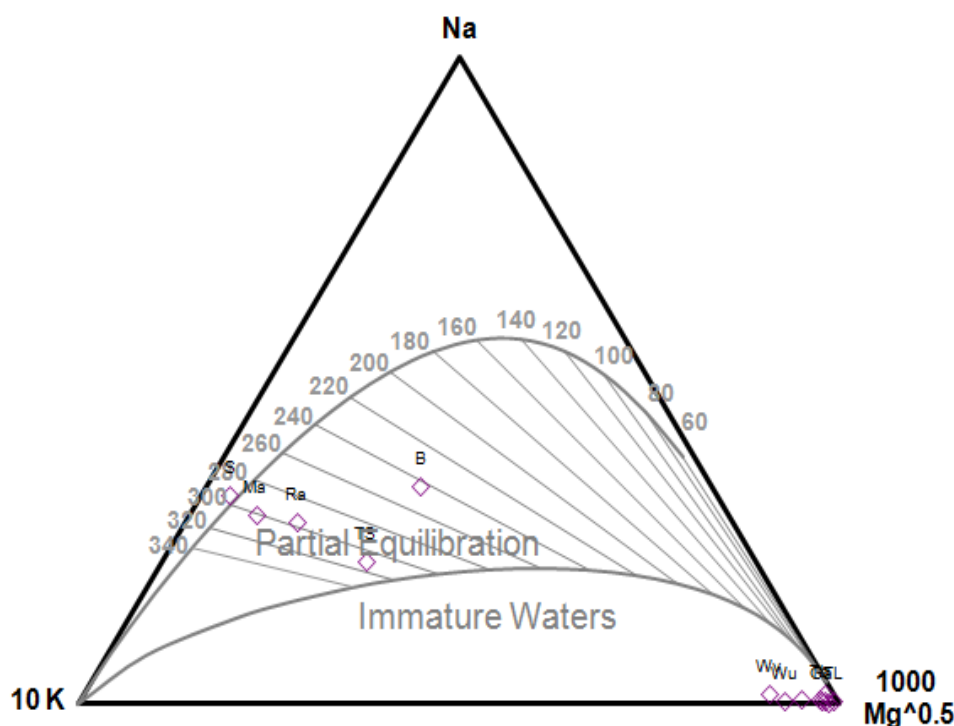


Figure 5: Ternary plot showing relative concentrations of Na, K and Mg and the Na-K and K-Mg geothermometers (Giggenbach, 1988). Plot has been generated using Powell and Cumming (2010). Ra = Rabili, Wv = Wavua 1, TS = Talasea Station, Ro = Rongo 1, M = Matagele, MG = Magilae, LD = Lake Dakataua, Wu = Wudi, Ga = Galu, Tb = Tabero, B = Bakama 1. TL = Taliau, S = Sakalu, Ma = Magouru.

### 3.2 Geothermometry

The application of chemical geothermometry to fully and partially equilibrated waters directly estimates the reservoir fluid temperatures. This is based on the principle that specific temperature-dependent mineral-solution equilibria are attained in the geothermal reservoir. As some fluid in this equilibrated reservoir escape and rise to a hot spring through buoyancy, it will usually cool by conduction and mix faster than it will chemically re-equilibrate. Some chemical species like silica equilibrate faster than others like sodium and potassium, therefore, the chemical composition of hot springs can be used to interpret the temperature and mixing history of a fluid in its path from the reservoir to the surface (Giggenbach, 1998). The most widely used liquid geothermometers involve silica concentration and relative concentrations of the cations Na, K, Mg and Ca. Hence, geothermometry calculations were applied to Sakalu, Magouru, Rabili, Talasea Station and Bakama 1 chemical analyses which generated the calculated geothermometry temperatures in Table 3.

Table 3: Water (solute) geothermometers (temperatures in C) generated using Powell and Cumming (2010), based on Giggenbach (1991). Immature waters are omitted.

Sample Name	Meas. T °C	T <sub>AmS</sub> cond.	T <sub>Ch</sub> cond.	T <sub>QZ</sub> cond.	T <sub>Na-K-Ca</sub>	T <sub>Na-K-Ca</sub> Mg	T <sub>Na/K</sub> Fournier 1979	T <sub>Na/K</sub> Giggenback 1988	T <sub>K/Mg</sub> Giggenback 1986
Rabili	100	118	233	246	273	265	286	296	230
Talasea Stn	100	59	162	184	271	239	301	310	197
Bakama 1	70	31	128	153	210	210	228	242	182
Sakalu	100	58	161	182	267	267	283	293	318
Magouru	100	112	226	240	275	275	291	300	262

Amorphous silica temperatures for Talasea Station, Bakama 1 and Sakalu are lower than the measured values (Table 3) while higher for Rabili and Magouru. These low silica geothermometry is a possible indication of dilution with cold water before reaching the surface or precipitation of silica before sample collection. The subsurface reservoir temperatures obtained by Na-K-Ca and Na/K geothermometers compare well with the values obtained from the quartz and chalcedony geothermometer temperatures for Rabili and Magouru but not so for Talasea Station, Bakama 1 and Sakalu. The calculated quartz geothermometer temperatures for the Rabili, Talasea Station, Bakama 1, Sakalu and Magouru hot springs indicate reservoir temperatures of 246 °C, 184 °C, 153 °C, 182 °C and 240 °C respectively. The Na/K and Na-K-Ca geothermometers indicate reservoir temperatures of 270-295 °C, 270-310 °C, 210-240 °C, 265-290 °C and 275-300 °C for Rabili, Talasea Station, Bakama 1, Sakalu and Magouru hot springs respectively.

#### 4. CONCLUSIONS

West New Britain Province is ideally located within an active tectonic region and has favourable environment for geothermal activity. The occurrence of geothermal surface features is confined to the Quaternary Kimbe Volcanics which comprises mainly of basaltic to rhyolitic pyroclastics and lavas and in recent alluvium areas in the lowlands. The geothermal activities in the Willaumez Peninsula appears to be controlled by deep seated northerly trending faults while those in Hoskins are unknown.

The geochemical analysis of water samples from the area reveals four prospective geothermal prospects;

- (i) Pangalu (Rabili) – 270-295 °C
- (ii) Talasea Station - 270-310°C
- (iii) Silanga (Bakama and Sakalu) – 210-290 °C
- (iv) Kasiloli (Magouru) – 275-300 °C

The Pangalu and Talasea Station geothermal prospects are located near the shoreline and are likely to be contaminated by seawater. Isotopic analysis is required in determining the source of the geothermal waters in these prospects as well as determining the likely contamination of seawater. It is noted that there is lack of gas and isotopic data analysis on the prospects investigated. It is therefore recommended that isotopic analysis is performed including the use of proper equipment in collecting gas samples to further analyze and correlate these data with the available geochemistry data.

Further investigations are required in surface geology mapping, geophysics surveys and geochemical surveys of hot springs not sampled yet to delineate the prospectivity of these geothermal prospects for development of geothermal energy.

#### ACKNOWLEDGMENTS

The authors wish to thank the PNG Mineral Resources Authority and the World Bank through its Technical Assistance (WBTA2) program for funding this investigation. We thank Miss Lynn Orari and Mrs Dorothy Pion of Geological Survey Division, Mineral Resources Authority for their assistance in reproducing the geology map of the study area. Our sincere thanks and gratitude to the West New Britain Provincial authorities and the local people for their support and assistance during the field work.

#### REFERENCES

- Berhane, D., Mosusu, N.: A review of the geothermal resources in Papua New Guinea, *Proceedings*, PNG Geology, Exploration and Mining Conference, Madang, (1997), 15-27.
- Cooper, P., and Taylor, B.: Seismicity and focal mechanisms at the New Britain Trench related to deformation of the lithosphere, *Technophysics*, **164**, (1989), 25-40.
- Davies, H.L.: New Guinea Geology, Encyclopedia of islands edited by RG Gilesie and DA Clague, University of California Press, (2009), 659-665.
- Giggenbach, W.F.: Geothermal solute equilibria. Derivation of Na-K-Mg-Ca geoindicators. *Geochim. Cosmochim. Acta*, **52**, (1988) 2749-2765.
- Giggenbach, W.F.: Chemical techniques in geothermal exploration *in* Application of geochemistry in geothermal reservoir development. UNITAR/UNDP publication, Rome, (1991), 119-142.
- Grindley, G.W., and Nairn, I.A., 1974b.: Geothermal investigations in Papua - New Guinea. New Zealand Geological Survey Unpublished Report M9, Department of Scientific and Industrial Research, pp. 30.
- Johnson, T., and Molnar, P.: Focal mechanisms and plate tectonics of the Southwest Pacific, *Journal of Geophysical Research: American Geophysical Union*, Volume 77, No.26, (1972), 5000 - 5032.
- Lowder, G.G., and Carmichael, I.S.E.: The volcanoes and caldera of Talasea, New Britain: geology and petrology, *Geological Society of America Bulletin*, **81**, (1970), p.17-38.
- McCoy-West, A.J., Bignall, G., and Harvey, C.C, 2009.: Geothermal power potential of selected Pacific Nations, GNS Science Consultancy Report 2009/180, 101p.
- Papua New Guinea District and Provincial Profiles, The National Research Institute, March 2010, 182p.
- Pichler, T.: Stable and radiogenic isotopes as tracers for the origin, mixing and subsurface history of fluids in shallow-water hydrothermal systems. *Journal of Volcanology and Geothermal Research*, 193 3-4, (2005), 211-226.
- Powell, T., and Cumming W.: Spreadsheets for geothermal water and gas geochemistry, *Proceedings*, Thirty-Fifth Workshop on Geothermal Reservoir Engineering, Stanford University, Stanford, California, SGP-TR-188 (2010), 10p.
- Ripper, I.D., and McCue, J.F.: The seismic zone of the Papuan Fold Belt: *BMR Journal of Australian Geology and Geophysics*, **8**, (1983), 147-156.
- Ryburn, R.J.: Talasea-Gasmata, New Britain - 1:250 000 Geological Series, Bureau of Mineral Resources, Geology and Geophysics, Explanatory Notes, SB/56-5 and BS/56-9, (1975), 26p.
- Williamson, A., and Hancock, G.: The geology and mineral potential of Papua New Guinea, Papua New Guinea department of Mining, (2005), 152p.