

Country Update Report for Kenya 2010-2014

Peter Omenda and Silas Simiyu

Geothermal Development Company, P. O. Box 100746, Nairobi 00101, Kenya

pomenda@gdc.co.ke

Keywords: Geothermal, Kenya rift, Country update.

ABSTRACT

Geothermal resources in Kenya have been under development since 1950's and the current installed capacity stands at 573 MWe against total potential of about 10,000 MWe. All the high temperature prospects are located within the Kenya Rift Valley where they are closely associated with Quaternary volcanoes. Olkaria geothermal field is so far the largest producing site with current installed capacity of 573 MWe from five power plants owned by Kenya Electricity Generating Company (KenGen) (463 MWe) and Orpower4 (110 MWe). 10 MWt is being utilized to heat greenhouses and fumigate soils at the Oserian flower farm. The Oserian flower farm also has 4 MWe installed for own use. Power generation at the Eburru geothermal field stands at 2.5 MWe from a pilot plant. Development of geothermal resources in Kenya is currently being fast tracked with 280 MWe commissioned in September and October 2014. Production drilling for the additional 560 MWe power plants to be developed under PPP arrangement between KenGen and private sector is ongoing. The Geothermal Development Company (GDC) is currently undertaking production drilling at the Menengai geothermal field for 105 MWe power developments to be commissioned in 2015. Detailed exploration has been undertaken in Suswa, Longonot, Baringo, Korosi, Paka and Silali geothermal prospects and exploration drilling is expected to commence in year 2015 in Baringo – Silali geothermal area.

1. INTRODUCTION

Commercial energy in Kenya is dominated by petroleum and electricity while wood fuel provides energy needs for the traditional sector including rural communities and the urban poor. At the national level, wood fuel and other biomass account for about 68% of the total primary energy consumption, followed by petroleum at 22%, electricity at 9% (121 KWh per capita) while others including coal accounts for less than 1%. Solar energy is also extensively used for drying and, to some extent, for heating and lighting. Current installed electric capacity in Kenya is dominated by hydro sources which has an installed capacity of 820 MWe while fossil fuel fired plants had 776 MWe. During the same period, 573 MWe of geothermal plants were installed and 69.5 MWe from wind (Table 1).

All the high temperature geothermal occurrences in Kenya are mainly associated with Quaternary volcanoes in the axis of the main rift valley (Mwangi, 2005; Omenda et al. 2000). The heat sources for most of the systems are due to shallow magma bodies under the volcanoes estimated. There are 14 large Quaternary volcanoes in Kenya and together with other prospective sites provides an estimate of possible generation of 10,000 MWe. The Government of Kenya has therefore set up an ambitious expansion plan that will provide additional generation of about 1,646 MWe from geothermal resources by 2017. Total generation from geothermal sources is planned to exceed 5,000 MWe by year 2030.

2. GEOLOGICAL BACKGROUND

The East African Rift system is part of the Afro Arabian Rift system that extends from the Red Sea to Mozambique in the south. As the rift extends from the Ethiopian segment southwards it bifurcates at about 5°N into the eastern and western branches. The two branches of the rift skirts around the Tanzania craton and formed within the Late Proterozoic belts adjacent to the margins of the craton (Mosley, 1993; Smith and Mosley, 1993). The eastern branch that comprises the main Ethiopian Rift and Kenya Rifts is older and relatively more volcanically active than the western branch that comprises Albert–Tanganyika–Malawi Rifts (Figure 1).

The development of the Kenya Rift followed the standard model for active rift formation that involved lithospheric extension accompanied by upwelling of the underlying asthenosphere and collapse. Decompression of the asthenosphere resulted in large volumes of magma generation and development of volcanoes on the crest of uplift. Some of the volcanoes developed shallow magma chambers of intermediate to silicic composition which are the most important geothermal resources. Further brittle extension of the crust resulted in down-faulting and formation of the graben. In the case of the EARS, extensions is more active in the north being more than 3-4 cm/year in the Red Sea – Gulf of Aden, 2-3 mm/year in the Main Ethiopian Rift, and less than 2 mm/year in the Kenya Rift and southwards. In response to the increased extension in the EARS, the Moho is between 0-5 km at Afar to 35 km along the axis of the rift in Kenya.

In the rift axis of the eastern branch there occurs numerous central volcanoes of Quaternary age overlying products of Miocene and Pliocene volcanism. The shield volcanoes are built largely of intermediate lavas and the associated pyroclastics, thus indicating the presence of shallow hot bodies (magma chambers). In the western branch, there is paucity of volcanism along the entire length of the rift with the main volcanic areas being Virunga and Rungwe. The geothermal activity in the East African Rift occurs in the form of hot springs, fumaroles, hot and altered grounds, and is closely associated with Quaternary volcanoes in the axis of the rifts (Figure 2). The association is related to the shallow hot magma bodies under the massifs, which are the heat sources. In the Afar, Ethiopian and Kenya Rifts where the crust has been thinned due to extension, high heat flux is contributed by a shallow mantle. In the less magmatic western branch of the rift, heat sources are a combination of buried intrusions and high heat flux associated with relatively thinned crust.

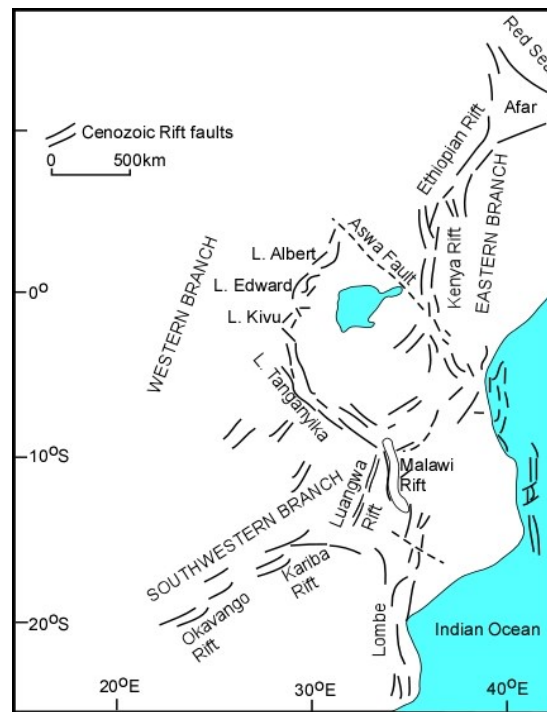


Figure 1: Structural map showing the East African Rift System

The rifting activity in the Kenya Rift began about 30 million years ago with uplift in the Lake Turkana area and then migrated southward being more intense about 14 million years ago. Formation of the graben structure in Kenya started about 5 million years ago and was followed by fissure eruptions in the axis of the rift to form flood lavas by about 2 to 1 million years ago. During the last 2 million years ago, volcanic activities became more intense within the axis of the rift due to extension (Dunkley et al. 1993). During this time, large shield volcanoes, most of which are geothermal prospects, developed in the axis of the rift. The volcanoes include Suswa, Longonot, Olkaria, Eburru, Menengai, Korosi, Paka, Silali, Emuruangogolak and Barrier.

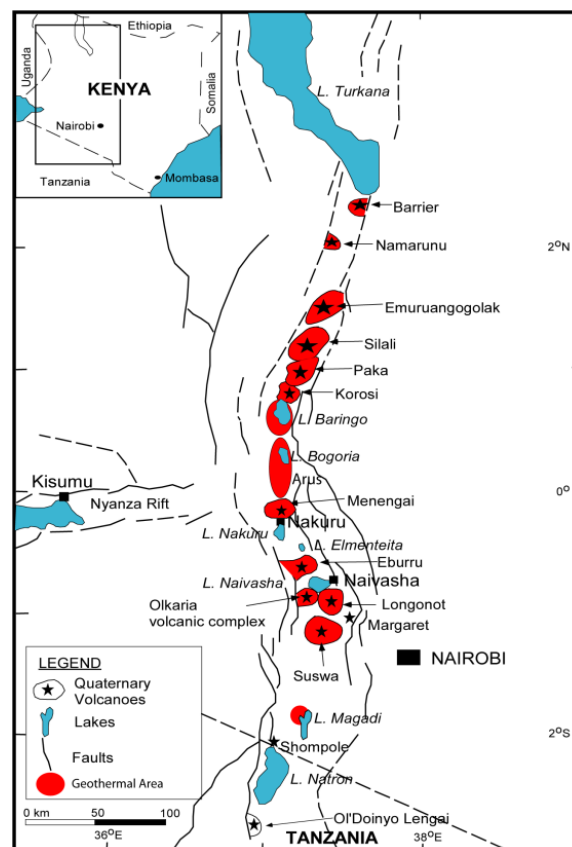


Figure 2: Simplified geological map of Kenya showing locations of the geothermal fields and prospects.

3. GEOTHERMAL RESOURCES IN KENYA

Exploration for geothermal energy in Kenya started in the 1950's with surface exploration that culminated in geothermal wells being drilled at Olkaria, Eburru and Menengai geothermal fields. The Greater Olkaria geothermal field has over 200 wells drilled producing 570 MWe while six wells have been drilled in Eburru and twenty five at Menengai. Geothermal development is currently being fast-tracked in Kenya with drilling ongoing in Menengai and Olkaria geothermal fields.

3.1 Olkaria Geothermal field

The Olkaria volcanic complex lies on the axis of the rift but with a bias towards the Mau escarpment. The rock outcrops is dominated by rhyolite flows and pyroclastics of which the youngest is the Ololbutot rhyolite obsidian flow that erupted at 180 ± 50 yr BP (Clarke et al., 1990). The landscape is also dotted with volcanic centres (Figure 1). Fault systems at Olkaria are dominantly in three directions: NW-SE, N-S and NE-SW (Figure 3). The latter two are younger and have affected even the Holocene flows while the NW trending faults are older and often associated with the rift graben formation. They are more common in the west where the field merges into the Pliocene Mau escarpment. In the sub surface, the volcanic complex has been divided into the east and west with the divide being the fault zone that runs through Olkaria Hill (Omenda, 1994, 1998). The lithology in the western sector is dominated by the Mau Tuffs but minor trachytes, rhyolite and basalt occur within the formation. The Greater Olkaria geothermal field has been divided into seven fields for ease of development and management, namely, East, West, North-West, North-East, Central, South-East, and Domes (Figure 4). The field has a capacity to generate more than 1,500 MWe and direct utilization of hundreds of MWt.

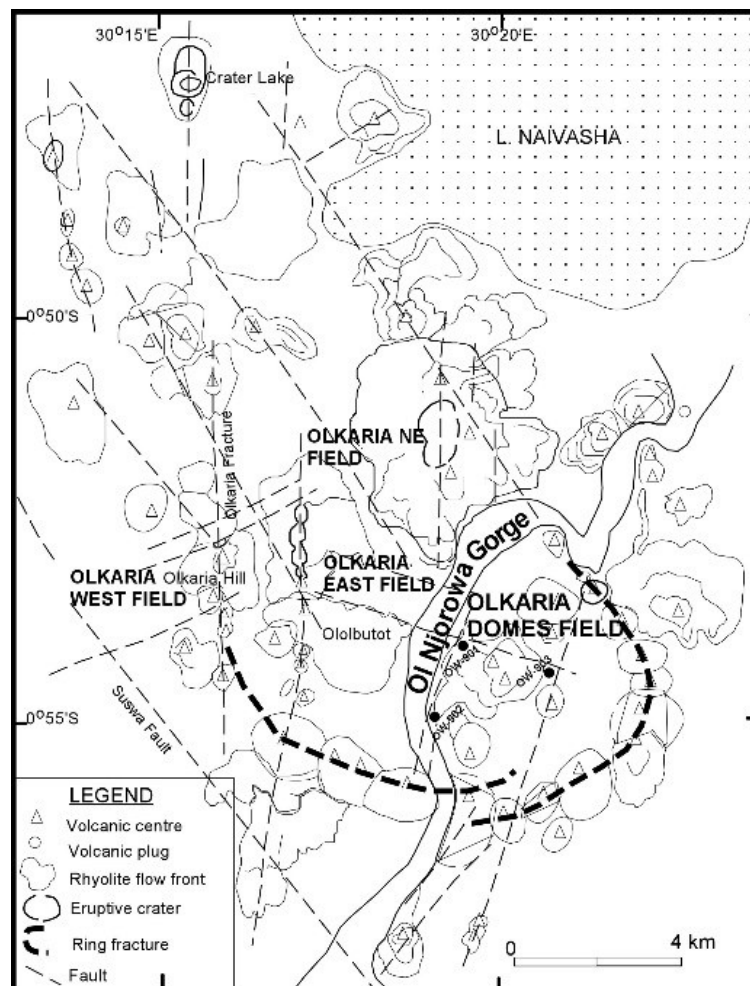


Figure 3. Structural map of Olkaria Geothermal field

3.1.1 Olkaria I

The Olkaria I field is located in the eastern sector of Olkaria field (Figure 4). The field is the home to Olkaria I power plant owned by Kenya Electricity Generating Company Ltd (KenGen) with three turbo generators each generating 15 MWe. The three units were commissioned in 1981, 1983 and 1985, respectively. The field was been expanded in 2014 by 140 MWe in two units. In addition, 70 MWe wellhead generators have been installed and commissioned. The increase of steam in the field was due to drilling of deeper wells of 3,000 m than the earlier wells that were drilled to between 900 m and 2200 m.

3.1.2 Olkaria II field

Olkaria II is located in Olkaria north-east field (Figure 4). The 2 x 35 MWe Olkaria II power plant was commissioned in 2003 while the third 35MWe unit was commissioned in 2010. The current total installed capacity at Olkaria II is 105MWe. Production drilling is ongoing in the field with intention of increasing the capacity of the field.

3.1.2 Olkaria IV field

Also known as Olkaria Domes field, surface exploration was carried out in 1993 and three exploration wells drilled in 1999. Appraisal drilling was undertaken in 2006 and 2007 and paved the way for production drilling that has continued to date. More than 350 MWe has been proved. 2x70 MWe Olkaria IV power plant was completed and commissioning in 2014. The eastern sector of the field is currently under appraisal and production drilling and is anticipated to host 140 MWe for Olkaria VI power plant.

3.1.3 Olkaria III field

Olkaria III field is located in the Olkaria west field (Figure 4). The field hosts the Olkaria III power plant which is owned and operated by Orpower 4, a subsidiary of Ormat International. It was the first and so far the only operational private geothermal power plant in Kenya. The project was developed in phases that started with an 8 MWe plant that was commissioned in 2000. Since then the power plant has been expanded to the current installed capacity of 110 MWe, operating on Organic Rankine Cycle (ORC) binary plants turbines.

3.1.4 Olkaria Central field. (Oserian Plants)

Olkaria Central field is located between Olkaria West and NE fields (Figure 4). All the wells drilled in the field have relatively lower outputs resulting from lower reservoir temperatures and lower permeability. Oserian Development Company (ODC) constructed two 2.0 MWe (gross) plants than run on ORC and back pressure technologies in Olkaria Central field to utilise fluid from wells OW-306 and OW-202 leased from KenGen. The plants which were commissioned in 2004 and 2006 provide electricity requirements for private use. ODC who grows cut flower for export also utilizes geothermal heat for greenhouse farming. The steam for direct use comes from well OW-101 which is a 1.28 MWe well also leased from KenGen. Plate heat exchangers are used to heat fresh water which is then used to heat the greenhouses and sterilize soils. Separated CO₂ is used to enrich the levels in the greenhouse. The use of geothermal heat has resulted in drastic reduction in operating costs in the flower farm.

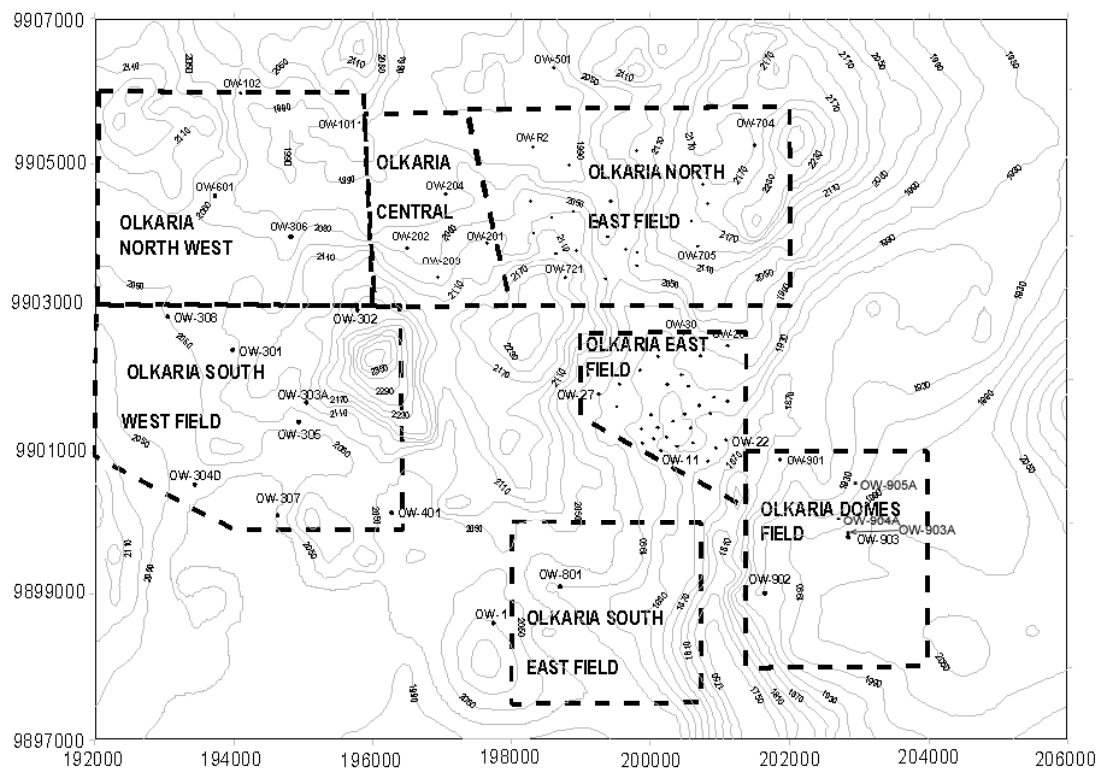


Figure 4: Map of the Greater Olkaria geothermal area showing the locations of the fields.

3.2 Eburru Geothermal Field

Eburru geothermal field is located to the north of Olkaria at the foot of the Mau escarpment (Figure 5). Detailed surface studies were concluded in 1990 and culminated in the drilling of six exploration wells between 1989 and 1991 (Figure 5). One of the six exploration wells encountered a high temperature geothermal system at >250°C (Omenda and Karingithi, 1993; Onacha, 1990). A 2.5 MWe condensing pilot plant was constructed and commissioned in 2012. MT/TEM surveys were done in 2006 and revealed that the Eburru field is capable of supporting up to 60 MWe.

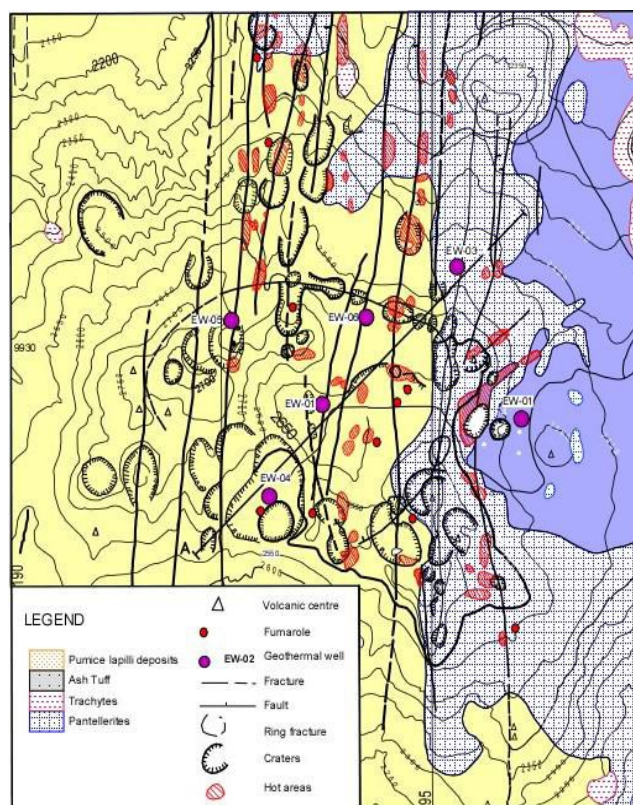


Figure 5: Map of Eburru geothermal field

3.3 Menengai geothermal field

Menengai is a Quaternary caldera volcano located within the axis of the central segment of the Kenya Rift. The volcano has been active since about 0.8 Ma to present. The volcano is built of Trachyte lavas and associated intermediate pyroclastics. Resurgent post caldera activity (<0.1 Ma) occurred on the caldera floor with an eruption of thick piles of trachyte lavas from various centres. MT resistivity distribution at 2000 m b.s.l shows a conductive body of less than 5 ohm-m under the caldera floor with westward extension (Figure 6). Seismology indicates seismic wave attenuation at <6 km depth underneath Menengai caldera suggesting occurrence of shallow magma bodies which would be the heat sources for the geothermal system. Simiyu (2003) predicted that the V_p/V_s ratios of 1.6-1.7 at Menengai suggest the occurrence of a steam-dominated reservoir. Gas geothermometry based on H_2S and CO_2 indicates that the reservoir temperatures are greater than $250^\circ C$ (Mungania et al., 2004).

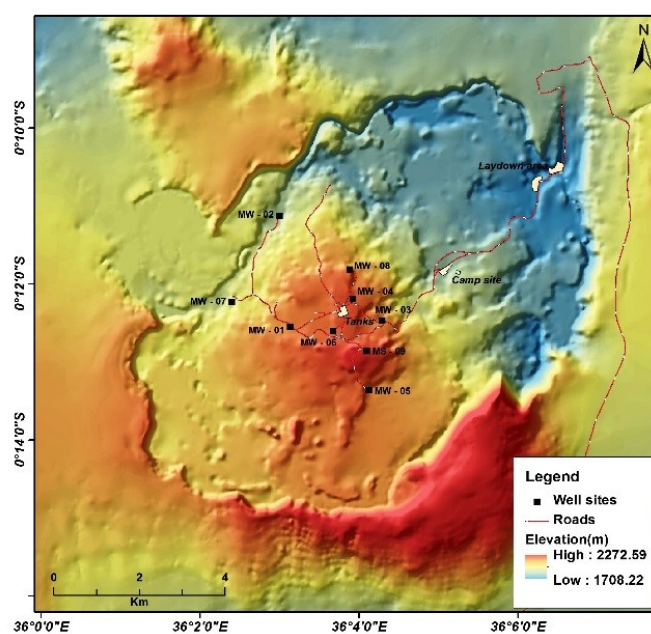


Figure 6: DEM image of Menengai geothermal field

Exploration drilling commenced in Menengai in 2011 and currently 25 deep wells of depths varying from 2,100 m to 3,200 m have been drilled. Reservoir temperatures of up to 400°C at 2,000 m have been encountered in several wells making it the hottest geothermal system in Kenya. Steam production from the wells varies from small to greater than 10 MWe. Currently 80 MWe of steam equivalent is on the wellhead and full steam production for the planned 105 MWe power plants is expected before the end of 2014. Three companies have been licensed for 20 years to operate 35 MWe modular plants each which are due to be commissioned within 2015.

3.4 Suswa

Suswa is the southernmost of a series of Quaternary caldera volcanoes in the Kenya rift. The volcano has two nested calderas: outer and inner with diameters of 10 and 4 km, respectively (Figure 7). Volcanism at Suswa started during late Pleistocene and continued to less than 1,000 years ago (Omenda, 1997). The volcanic products comprised trachytes, phonolites and their pyroclastic equivalents.

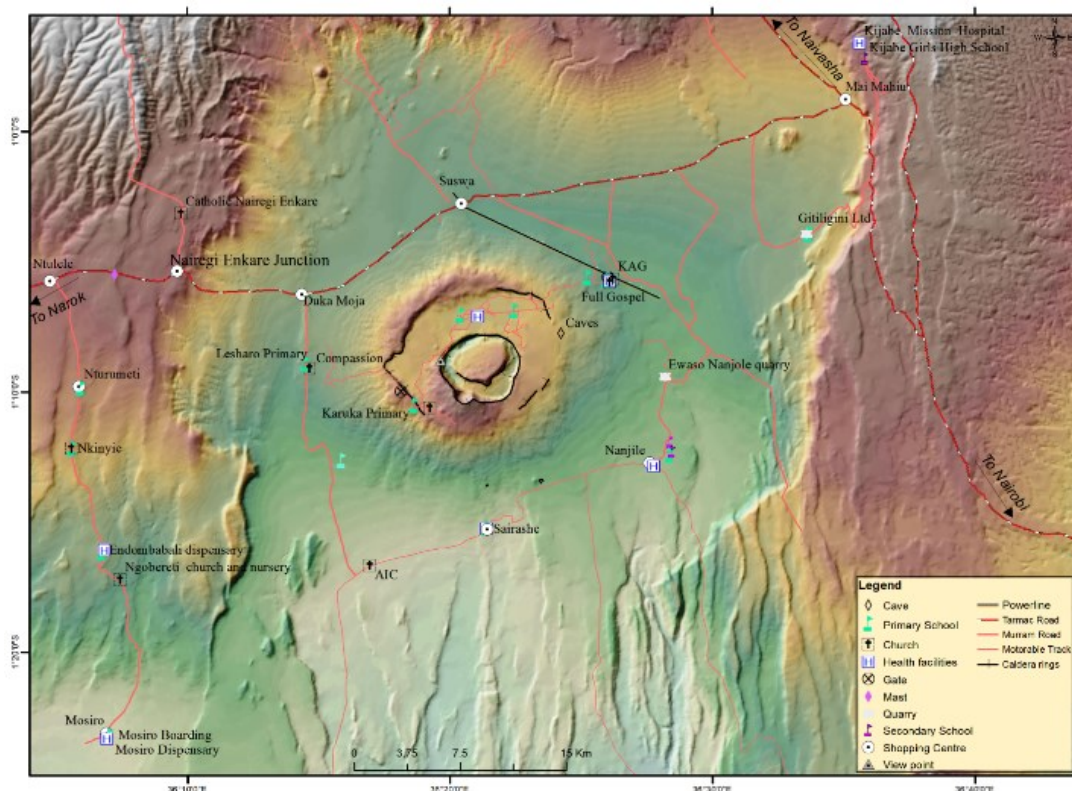


Figure 7: DEM image of Suswa geothermal prospect

Results from detailed surface studies suggest reservoir temperatures of >300°C based on gas geothermometry. Seismic and gravity studies show that the heat source under the caldera is at about 6 km depth. Resistivity (MT) indicates an anomaly centred below the inner caldera and extending to the northeast out of the inner caldera. Exploratory drilling is expected to commence in year 2015. The prospect is licensed to GDC and will be developed under PPP arrangement.

3.5 Longonot Prospect

Longonot is a large caldera volcano within the floor of the southern Kenya Rift adjacent to Olkaria Geothermal field (Figure 8). The volcano comprises of a large trachyte caldera of about 11 km diameter and a resurgent activity on the caldera floor that formed a central volcano with a crater at the summit. The caldera floor is filled, to a large extent, by trachytic ashes from the central volcano. The youngest activity (<300 yrs BP) at Longonot was of mixed Trachyte-basalt composition and erupted within the crater floor and on the northern flank of the central volcano. Geothermal surface manifestations are mainly fumaroles and hot grounds within the central crater. The geochemical survey revealed high radon and CO₂ gas discharges with gas geothermometry indicating geothermal reservoir temperatures of more than 300°C (KenGen, 1998).

Combined MT, gravity and seismics indicate that the heat source is at 6 km deep with the shallowest portion directly under the central volcano (Alexander and Ussher, 2011). Geothermometry indicates that a high temperature geothermal system >250°C exists under the volcano. The prospect was leased to African Rift Geothermal Limited (AGIL) for 20 years. The company plans to commence exploratory drilling in 2015 which would lead to staged development of 70 MWe power plants with full commissioning in 2018.

3.6 Baringo prospect

Lake Baringo geothermal prospect is in the northern part of the Kenyan Rift adjacent to Lake Baringo (Figure 2). Surface manifestations include fumaroles, hot springs, thermally altered hot grounds and anomalous ground water boreholes. The geology

of the area is characterized by trachyte and trachy-phonolite to the east and west while basalts occur to the north and alluvial deposits to the south. There are no Quaternary volcanoes within the prospects. Gas geothermometry indicates reservoir temperatures of 120-200°C in the western sector of the field. Resistivity suggests the occurrence of fault controlled, discrete reservoirs in areas to the west of the prospect. Since the prospect is not associated with a young centralized volcano, it is postulated that the heat source for the geothermal system is due to deep circulation along the fault planes (Mungania et al., 2004; Ofwona, 2004). GDC plans to drill at least two exploration wells in the prospect in 2015.

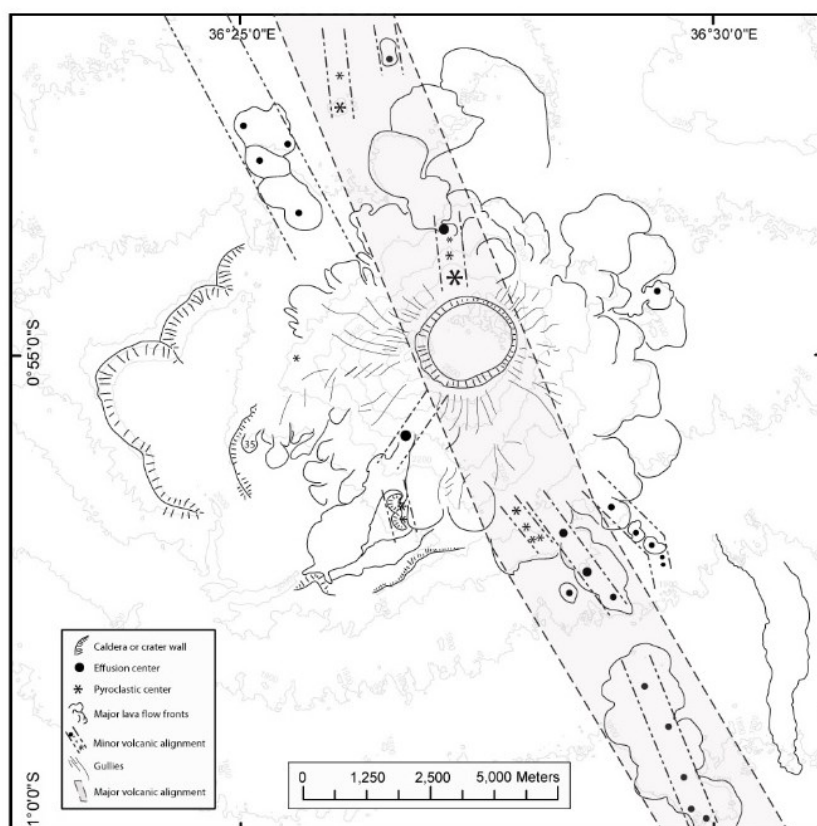


Figure 8: Structural map of Longonot Prospect

3.7 Korosi prospect

Korosi volcano is located in the northern part of Kenyan Rift valley and neighbours Lake Baringo to the south and Paka volcano to the north (Figure 2). Detailed surface studies were undertaken between 2005 and 2012. The latest volcanic activity associated with Korosi volcano was of basaltic composition and occurred a few hundred years ago while the last trachytic volcanism occurred about 100 ka. The MT resistivity surveys indicate an anomaly below the Korosi massif. Gas geothermometry indicates reservoir temperatures of more than 250°C. Exploration drilling in the prospect is planned to be undertaken by GDC in 2015.

3.8 Paka Prospect

Detailed surface studies of Paka volcano was undertaken in 2006 and 2007. Paka is a relatively small shield volcano constructed largely by trachyte lavas and pyroclastic deposits and located just to the north of Korosi volcanic complex (Figure 2). Volcanic activity commenced about 390 ka and continued to 10 ka. The structure of Paka is dominated by a broad zone of normal faulting 7.5 km wide graben bound by the eastern and the western fault boundaries respectively. Surface geothermal activity is widely developed at Paka particularly within the summit craters and the northern flanks where fumaroles at >97°C are common. Gas geothermometry of fluids from Paka indicate the reservoir system to be at more than 250°C. MT resistivity at Paka prospect shows a conductor under the volcano. Seismic studies indicate shallow events directly under Paka suggesting that a hot body exists below about 5 km depth. GDC plans to undertake exploration drilling in the prospect in 2015.

3.9 Other Geothermal Prospects

The other potential geothermal prospects within the Kenya Rift that have not been studied in great depth include Lake Magadi, Emuruangogolak, Namarunu and Barrier volcanic complex (Figure 2). Detailed studies of these prospects are planned by GDC for the period between 2014 and 2017. Other areas with geothermal potential include Lake Bogoria and Arus (Karingithi, 2005; Mwawongo, 2005).

4. DISCUSSION

Kenya is currently the epicenter of geothermal developments in Africa with current installed capacity of 573 MWe and a further ~10 MWt (Table 1). Installed electric capacity has seen a growth of 243% from 2010 when installed geothermal capacity was 167 MWe (Simiyu, 2010). Part of the new generation comes from wellhead power plants (70MWe) which KenGen has constructed to

utilize idle steam prior to construction of the main plants. Plans are underway to increase the capacity to 1,646 MWe by 2017 and a total of 2,765 MWe by 2020. The increase will be achieved through the additional plants under construction at Olkaria and new plants at Menengai field and Silali prospect. A majority of the new plants will be owned by private developers, e.g. 560 MWe at Olkaria through PPP arrangement. Other IPP plants will be by AGIL plant at Longonot; Akiira; one plant at Olkaria; and 3 IPPS at Menengai. PPP projects are also planned for Silali and Suswa prospects (Table 2).

Direct use of geothermal energy has not grown significantly since 2010 and greenhouse heating remains the leader with installed capacity of 10 MWt (Tables 3 and 5) (Lagat, 2010). Pyrethrum drying still exists but the amount of energy used is low. KenGen recently commissioned their equivalent of “the blue lagoon” at the Olkaria II plant where brine from production wells is channeled into the pool. The energy used at the pool is still not well documented but is estimated to be about 5 MWt. Ground source pumps have not been installed in Kenya (Table 4). The number of drilled wells in Kenya have increased steadily from the 1950’s and increased significantly during the last few years (Table 6). The wells that were drilled for exploration, appraisal, production and injection vary in depth from 2,100 m to 3,200 m focusing mainly on the high temperature systems. In Kenya, exploration and development has focused mainly on the high temperature systems as shown by the over 206 wells that have been drilled into the high temperatures resources (Table 6). The wells that recorded lower temperatures were drilled as high temperature wells but encountered low enthalpy. Human resources utilized in Kenya during the last 5 years came largely from private industry and foreign consultants but universities participation was insignificant (Table 7).

5. CONCLUSIONS

It is clear that indirect utilization of geothermal energy in Kenya improved dramatically in the last few years and the future outlook is even brighter with more projects lined up. It is also gratifying to note that the private sector will increasingly play a major role in both greenfield and brownfield developments as Kenya focuses on the 2,765 MWe generation by year 2020. Future developments will not only result in increased generation at Olkaria and Menengai fields but discovery and developments of new fields at Baringo-Silali and Suswa geothermal areas. Direct utilization increased marginally but growth is expected with GDC putting focus not only on electricity generation but also direct use.

REFERENCES

- Clarke, M. C. G., Woodhall, D. G., Allen, D. and Darling, G., 1990. Geology, volcanological and hydrogeological controls on the occurrence of geothermal activity in the area surrounding Lake Naivasha, Kenya. Report of the Ministry of Energy of Kenya.
- Dunkley, P. N., Smith, M., Allen, D. J. and Darling, W. G., 1993. The geothermal activity and geology of the northern sector of the Kenya Rift Valley. British Geological Survey Research Report SC/93/1.
- Alexander and Ussher, 2011. Geothermal Resource Assessment for Mt. Longonot, Central Rift Valley, Kenya. Proceedings of Kenya Geothermal Conference.
- Karingithi C.W. 2005: Geochemical report of Arus and Bogoria geothermal prospects, Kenya Electricity Generating Company Ltd. Internal report pp 24.
- KenGen, 1998. Surface scientific investigation of Longonot geothermal prospect. KenGen Internal report, pp. 91
- KenGen, 1999: Suswa and Longonot geothermal prospects. Comparison of surface scientific data. Kenya
- KenGen, 1998. Surface scientific investigation of Longonot geothermal prospect. KenGen Internal report, pp. 91.
- Lagat, J., 2010. Direct Utilization of Geothermal Resources in Kenya. World Geothermal Congress 2010, Bali, Indonesia
- Mungania J., Lagat J., Mariita N.O., Wambugu J. M., Ofwona C.O., Kubo B. M., Kilele D. K., Mudachi V.S., Wanje C. K., Menengai prospect: Investigations for its geothermal potential, 2004 . The Government of Kenya and Kenya Electricity Generating Company Limited, internal report. pp 7.
- Mungania J., Omenda .P.(Dr), Mariita N., (Dr.), Karingithi C., Wambugu J., Simiyu S., Ofwona C., Ouma P., Muna Z., Opondo K., Kubo B., Wetangu’la G., Lagat J., 2004: Geo-scientific resource evaluation of the Lake Baringo geothermal prospect., Kenya Electricity Generating Company Limited, internal report.
- Mwangi, M. 2005. Country Update Report for Kenya 2000-2005. Proceedings World Geothermal Congress 2005 Antalya, Turkey, 24-29 April 2005
- Mwawongo G.M., 2005: Heat loss assessment at Arus and L Bogoria geothermal prospects. Kenya Electricity Generating Company Limited, internal report. pp 7.
- Ofwona .C.O., 2004: Heat loss assessment of L Baringo geothermal prospect, Kenya Electricity Generating Company Ltd. Internal report pp 19.
- Omenda P. A., 1997. The geochemical evolution of Quaternary volcanism in the south central portion of the Kenya rift. PhD Thesis, Univ. Texas at El Paso, pp 217.
- Omenda, P. A. and Karingithi C.W., 1993. Hydrothermal model of Eburru geothermal field, Kenya. GRC Transactions, vol. 17, pp 155-160.
- Omenda P.A., Opondo K., Lagat J., Mungania J., Mariita N., Onacha S., Simiyu S., Wetang’ula G. and Ouma P., 2000. Ranking of geothermal prospects in the Kenya rift. KenGen Internal report, pp. 121.
- Onacha, S.A. 1990. The electrical resistivity structure of the Eburru prospect. KPLC Internal report
- Simiyu, S. M., 2010. Status of Geothermal Exploration in Kenya and Future Plans for its Development. World Geothermal Congress 2010, Bali, Indonesia

STANDARD TABLES

TABLE 1. PRESENT AND PLANNED PRODUCTION OF ELECTRICITY

	Geothermal		Fossil Fuels		Hydro		Nuclear		Other Renewables (Wind)		Total	
	Capacity MWe	Gross Prod. GWh/yr	Capacity MWe	Gross Prod. GWh/yr	Capacity MWe	Gross Prod. GWh/yr	Capacity MWe	Gross Prod. GWh/yr	Capacity MWe	Gross Prod. GWh/yr	Capacity MWe	Gross Prod. GWh/yr
In operation in December 2014	573	5,063.28	776.346	4,080.50	820.2	4,311	0	0	69.5	182.65	2,244.05	13,657.28
Under construction in December 2014	105	901.4	0	0	400	2,102.40	0	0	0	0	540	3,003.80
Funds committed, but not yet under construction in December 2014	1,115	9,279.03	0	0	90	473.04	0	0	610	1870.26	1,815.00	11,622.33
Estimated total projected use by 2020	2,765.10	21,800.05	3753.85	26,718.82	1310.2	6886.4	0	0	679.5	2121.89	8,508.60	57,527.17

TABLE 2. UTILIZATION OF GEOTHERMAL ENERGY FOR ELECTRIC POWER GENERATION AS OF 31 DECEMBER 2014

Locality	Power Plant Name	Year Commissioned	No. of Units	Status ¹⁾	Type of Unit ²⁾	Total Installed Capacity	Total Running Capacity	Annual Energy Produced 2014 ³⁾	Total under Constr. or Planned
						MWe*	MWe*	GWh/yr	MWe
Olkaria	Olkaria I	1981 (15MW), 1982 (15MW), 1985 (15MW)	3	Operating	1F	45	45	377.7312	
Olkaria	Olkaria II	2003	3	Operating	1F	70	70	488.808	
Olkaria	Olkaria II Unit 3	2010	3	Operating	1F	35	35	275.94	
Eburru	Eburru	2010	1	Operating	B	2.5	2.5	19.71	
Oserian	Oserian	2003, 2006	2	Operating	B	4	1.8	1.8	
Olkaria	Olkaria Wellhead OW37	2013	1	Operating	1F	5	5	39.42	
Olkaria	Olkaria Wellhead OW43	2014	4	Operating	1F	12.8	12.8	100.9152	
Olkaria	OrPower 4 -Unit I	2000	-	Operating		52.8	52.8	416.2752	
Olkaria	OrPower 4 -Unit II	2008		Operating		39.6	39.6	312.2064	
Olkaria	OrPower 4 -Unit III	2014	1	Operating		17.6	17.6	138.7584	
Olkaria	Olkaria IV Unit 1	2014	1	Operating	1F	70	70	148.2	
Olkaria	Olkaria IV Unit 2	2014	1	Operating	1F	70	70	148.2	
Olkaria	Olkaria I Unit 4	2014	1	Operating	1F	70	70	148.2	
Olkaria	Olkaria Wellhead	2014	1	Operating	1F	32.8	32.8	92.57	
Olkaria	Olkaria Wellhead	2014	1	Operating	1F	30	30	84.67	
Olkaria	Olkaria I Unit 5	2014	1	Operating	1F	70	70	148.2	
Menengai	Menengai	2014**	3	Construction Ongoing	1F	-	-	-	105
Silali	Silali	2017**	NYD	Planned	-	-	-	-	200
Longonot	AGIL	2017**	"	Planned	-	-	-	-	70
Suswa	Suswa	2017**	"	Planned	-	-	-	-	150
Olkaria	AKIIRA One	2017**	"	Planned	-	-	-	-	70
Menengai	Menengai	2017**	"	Planned	-	-	-	-	360
Eburru	Eburru	2018**	"	Planned	-	-	-	-	25
Total						573	573	2169.764	1324.8

1F = Single Flash; B = Binary

* Installed capacity is maximum gross output of the plant; running capacity is the actual gross being produced; ** Projected Year of Commissioning, NYD Not Yet Determined.

TABLE 3. UTILIZATION OF GEOTHERMAL ENERGY FOR DIRECT HEAT AS OF 31 DECEMBER 2014 (other than heat pumps)

		Maximum Utilization					Capacity ³⁾	Annual Utilization		
Locality	Type ¹⁾	Flow Rate	Temperature (°C)		Enthalpy ²⁾ (kJ/kg)			Ave. Flow	Energy ⁴⁾	Capacity
		(kg/s)	Inlet	Outlet	Inlet	Outlet	(MWt)	(kg/s)	(TJ/yr)	Factor ⁵⁾
Oserian	G						16		126.62	
Olkaria	B						5		40	
Eburru	A						1		10	
Lake Bororia	B						0.4		6	
TOTAL							22.4		182.62	

G = Greenhouse, B = Bathing and Swimming (including Balneology), A = Agricultural Drying

TABLE 5. SUMMARY TABLE OF GEOTHERMAL DIRECT HEAT USES AS OF 31 DECEMBER 2014

Use	Installed Capacity ¹⁾	Annual Energy Use ²⁾	Capacity Factor ³⁾
	(MWt)	(TJ/yr = 10 ¹² J/yr)	
Individual Space Heating ⁴⁾			
District Heating ⁴⁾			
Air Conditioning (Cooling)			
Greenhouse Heating	16	126.62	
Fish Farming			
Animal Farming			
Agricultural Drying ⁵⁾	1.0	10	
Industrial Process Heat ⁶⁾			
Snow Melting			
Bathing and Swimming ⁷⁾	5.4	46	
Other Uses (specify)			
Subtotal			
Geothermal Heat Pumps			
TOTAL	22.4	182.62	

4) Other than heat pumps; 5) Includes drying or dehydration of grains, fruits and vegetables; 6) Excludes agricultural drying and dehydration; 7) includes balneology

TABLE 6. WELLS DRILLED FOR ELECTRICAL, DIRECT AND COMBINED USE OF GEOTHERMAL RESOURCES FROM JANUARY 1, 2010 TO DECEMBER 31, 2014 (excluding heat pump wells)

Purpose	Wellhead Temperature	Number of Wells Drilled				Total Depth (km)
		Electric Power	Direct Use	Combined	Other (specify)	
Exploration ¹⁾	(all)	27	0	0	0	43
Production	>150° C	206	1	4	0	432.6
	150-100° C	35	0	0	0	73.5
	<100° C	10	0	0	0	21
Injection	(all)	35	0	0	0	73.5
Total		313	1	4	0	643.6

¹⁾ Include thermal gradient wells, but not ones less than 100 m deep

TABLE 7. ALLOCATION OF PROFESSIONAL PERSONNEL TO GEOTHERMAL ACTIVITIES (Restricted to personnel with University degrees)

Year	Professional Person-Years of Effort					
	-1	-2	-3	-4	-5	-6
2010	4	72	0	12	5	8
2011	0	26	0	7	8	4
2012	0	17	0	16	5	10
2013	0	34	1	14	8	2
2014	0	14	0	4	6	0
Total	4	163	1	53	32	24

- (1) Government (4) Paid Foreign Consultants
 (2) Public Utilities (5) Contributed Through Foreign Aid Programs
 (3) Universities (6) Private Industry

TABLE 8. TOTAL INVESTMENTS IN GEOTHERMAL IN (2014) US\$

Period	Research & Development Incl. Surface Exploration & Exploration Drilling	Field Development Including Production Drilling & Surface Equipment	Utilization		Funding Type	
			Direct	Electrical	Private	Public
	Million US\$	Million US\$	Million US\$	Million US\$	%	%
1995-1999	8.8	5	0	13.8	0	100
2000-2004	0.125	20	8	194	13	87
2005-2009	1.0	186.0	0	195.0	24	76
2010-2014	16.5	1,004.20	1.2	1,137.50	21.15	78.85